

KHGP Dimensional Information

KHGP TOP AND SIDE VIEWS

DIMENSIONAL REFERENCES

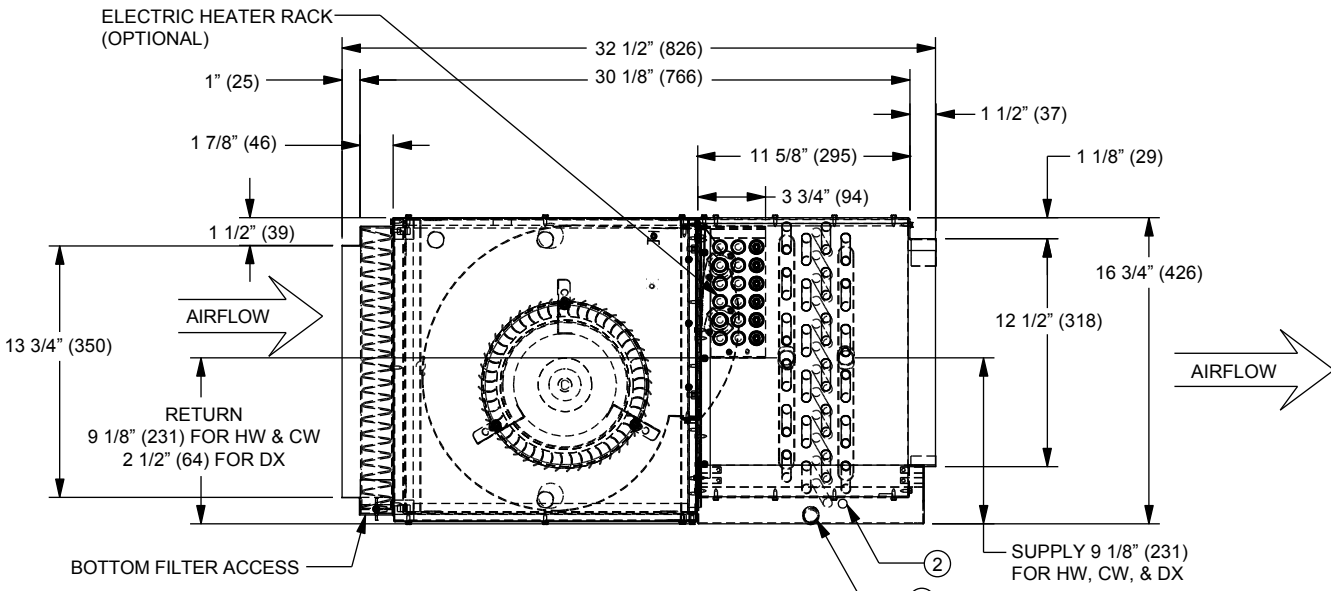
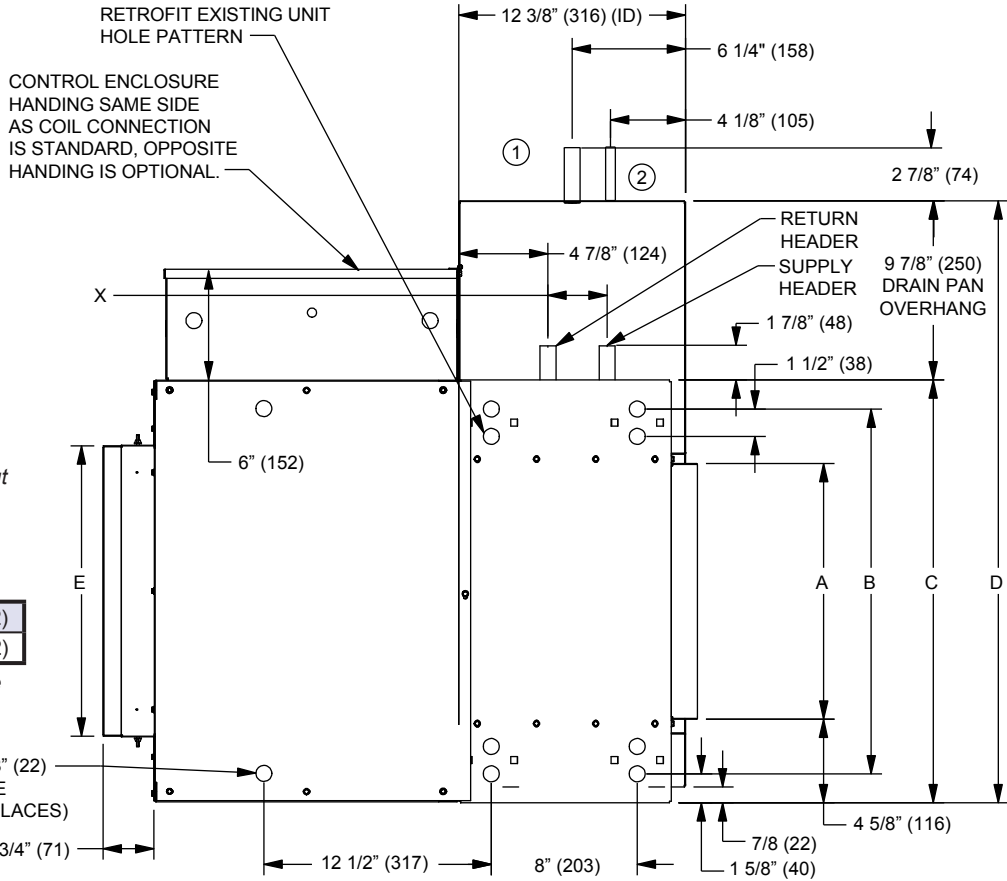
Coil Rows	Coil Circ.	X
1*	1	0.00" (0)
1	2	1.08" (55)
2	Any	1.08" (55)
3	Any	2.17" (82)
4	Any	3.25" (110)
6	Any	5.42" (165)

*NOTE: 1 Row single circuit coils are on the same axis, but are 13 3/4" apart in height.

KHGP CONTROL ENCLOSURE SIZES

10 x 16 x 6 (250 x 406 x 152)
16 x 16 x 6 (406 x 406 x 152)

NOTE: Control enclosure size is determined by electrical components selected.

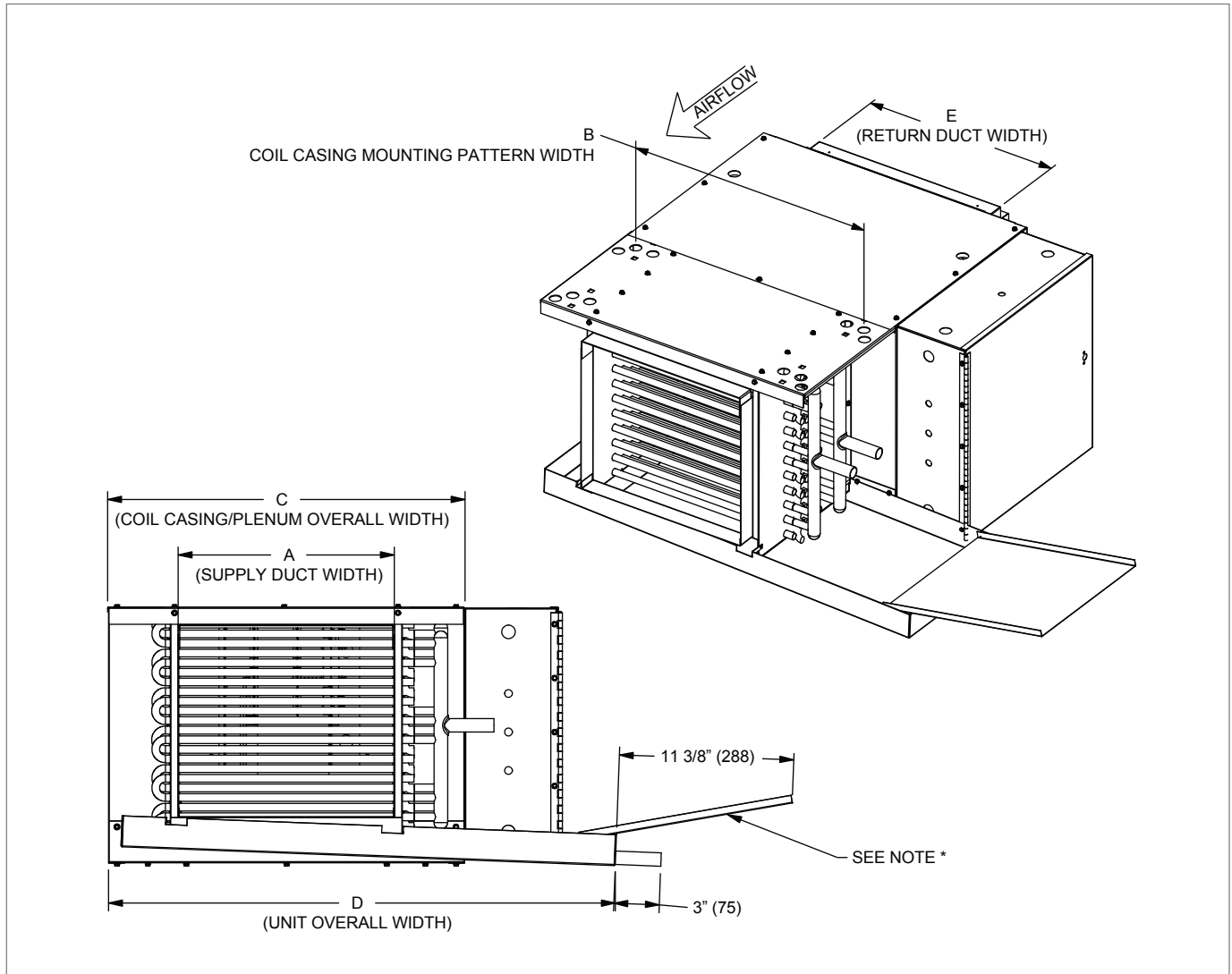


Drain Pan Material	Single Connection (STD) ①	Secondary Connection (OPTIONAL) ②
Galvanized (STD)	7/8" OD Copper	5/8" OD Copper
Stainless (OPT)	3/4" MPT Galv.	1/2" MPT Galv.

NOTES: All dimensions are in inches (millimeters) and are +/- 1/8". See next page for specific unit dimensions, options and specifications. It is recommended to provide 3' access on pipe connection side. Provide access clearance for electrical enclosure per local and national electrical code requirements.

FAN COILS

K
I
G
H
T
S

KHGP Dimensional Information
KHGP ISOMETRIC AND SIDE VIEWS

DIMENSIONAL REFERENCES

Unit Size	Fan Quantity	A	B	C	D	E
6	1	14" (356)	20" (508)	23 1/8" (587)	34" (864)	16" (406)
8	1	19" (483)	25" (635)	28 1/8" (714)	39" (991)	19 7/8" (505)
10	1	23" (584)	29" (737)	32 1/8" (816)	43" (1092)	25 7/8" (657)
12	2	28" (711)	34" (864)	37 1/8" (943)	48" (1219)	32" (813)
14	2	33" (838)	39" (991)	42 1/8" (1070)	53" (1346)	35 7/8" (911)
16	2	38" (965)	44" (1118)	47 1/8" (1197)	58" (1473)	39 7/8" (1013)
18	2	43" (1092)	49" (1245)	52 1/8" (1324)	63" (1600)	44 7/8" (1140)
20	2	47" (1194)	53" (1346)	56 1/8" (1426)	67" (1702)	49 7/8" (1267)

NOTES: All dimensions are in inches (millimeters) and are +/- 1/8". Drain pan is field reversible 180° and externally insulated. Coil hand is field reversible (left hand unit shown). Plenum box is field reversible for rear or bottom return air. Filter rack can accommodate standard 1" TAW and 1" and 2" pleated filters.

* Optional auxiliary drip pan available for piping package condensate.

KHGP with Mixing Box Dimensional Information

KHGP WITH MIXING BOX TOP AND SIDE VIEWS

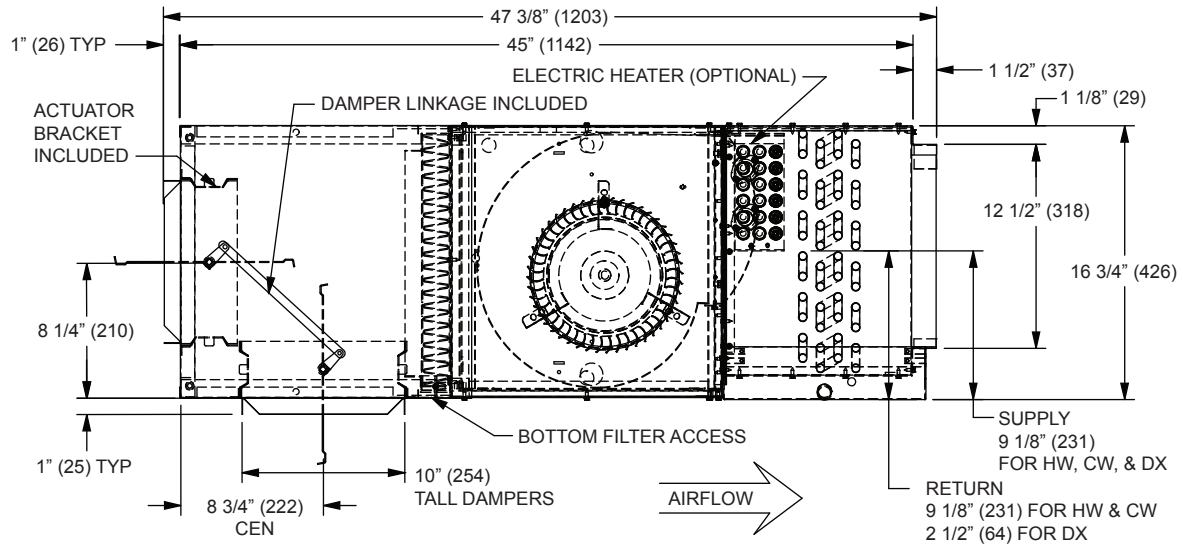
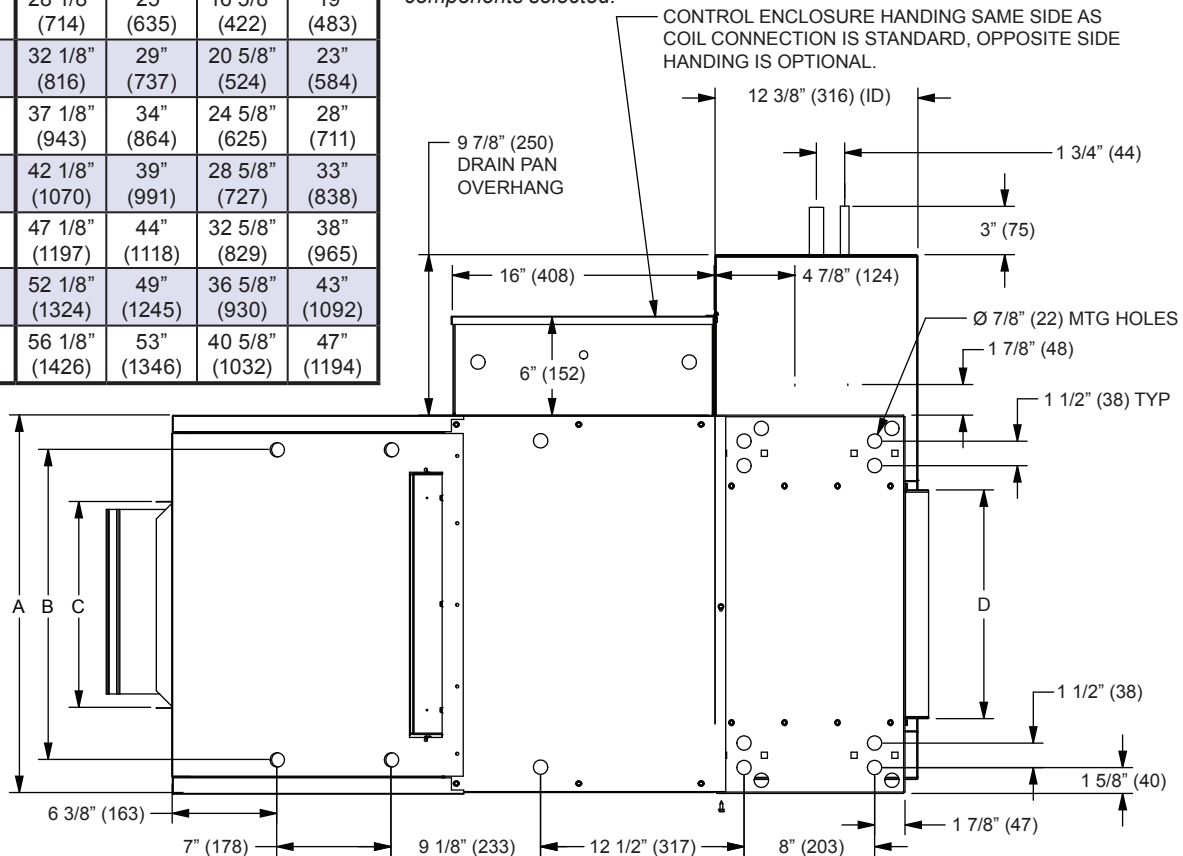
DIMENSIONAL REFERENCES

Unit Size	A	B	C	D
6	23 1/8" (587)	20" (508)	12 5/8" (321)	14" (356)
8	28 1/8" (714)	25" (635)	16 5/8" (422)	19" (483)
10	32 1/8" (816)	29" (737)	20 5/8" (524)	23" (584)
12	37 1/8" (943)	34" (864)	24 5/8" (625)	28" (711)
14	42 1/8" (1070)	39" (991)	28 5/8" (727)	33" (838)
16	47 1/8" (1197)	44" (1118)	32 5/8" (829)	38" (965)
18	52 1/8" (1324)	49" (1245)	36 5/8" (930)	43" (1092)
20	56 1/8" (1426)	53" (1346)	40 5/8" (1032)	47" (1194)

KHGP CONTROL ENCLOSURE SIZES

10 x 16 x 6 (250 x 406 x 152)
16 x 16 x 6 (406 x 406 x 152)

NOTE: Control enclosure size is determined by electrical components selected.



NOTES: All dimensions are in inches (millimeters) and are +/- 1/8". The mixing box is field reversible from bottom to top and rear return. It is recommended to provide 3' access on pipe connection side. Provide access clearance for electrical enclosure per local and national electrical code requirements. Mixing box side panels are removable for access to the linkage / actuator.

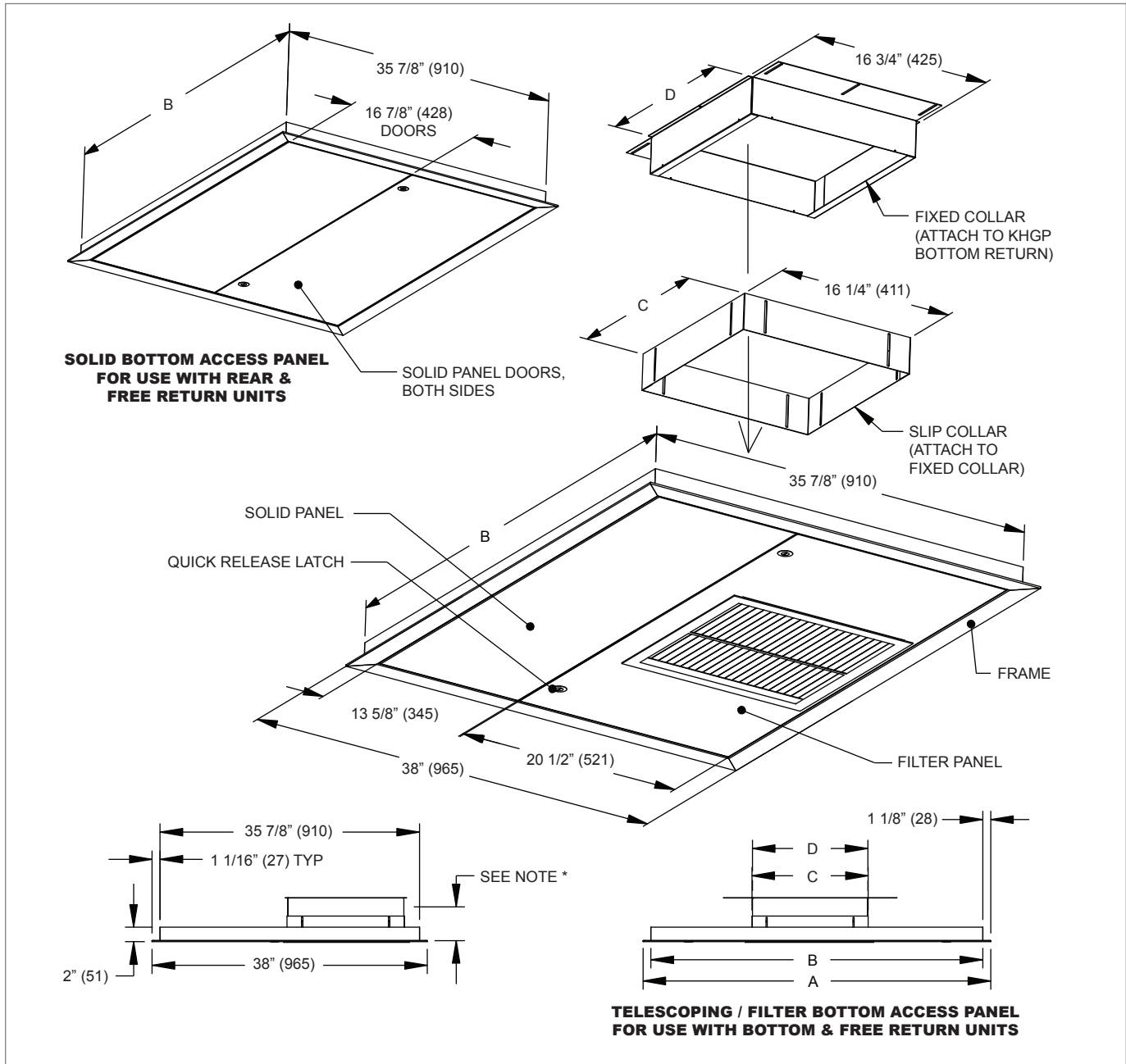
FAN COILS

K I T C H E N

© KRUEGER 2012

KHG Series Dimensional Information

KHG SERIES TELESCOPING / FILTER AND SOLID BOTTOM ACCESS PANELS



KHG SERIES TELESCOPING / FILTER AND SOLID BOTTOM ACCESS PANELS DIMENSIONAL REFERENCES

Unit Size	A	B	C	D	Recommended Ceiling Cutout
6	48" (1219)	45 7/8" (1164)	16" (408)	15 7/8" (404)	46 1/8" x 36 1/8" (1171 x 918)
8	53" (1346)	50 7/8" (1291)	20" (509)	19 7/8" (506)	51 1/8" x 36 1/8" (1298 x 918)
10	57" (1448)	54 7/8" (1392)	25" (636)	24 7/8" (633)	55 1/8" x 36 1/8" (1400 x 918)
12	62" (1575)	59 7/8" (1519)	32" (814)	31 7/8" (811)	60 1/8" x 36 1/8" (1527 x 918)
14	67" (1702)	64 7/8" (1646)	36" (916)	35 7/8" (912)	65 1/8" x 36 1/8" (1654 x 918)
16	72" (1829)	69 7/8" (1773)	40" (1017)	39 7/8" (1014)	70 1/8" x 36 1/8" (1781 x 918)
18	77" (1956)	74 7/8" (1900)	45" (1144)	44 7/8" (1141)	75 1/8" x 36 1/8" (1908 x 918)
20	81" (2057)	78 7/8" (2002)	50" (1271)	49 7/8" (1268)	79 1/8" x 36 1/8" (2009 x 918)

NOTES: All dimensions are in inches (millimeters) and are +/- 1/8". 1" TAW filter standard, 1" or 2" pleated filters are optional. Bottom panels are removable. Filter and grille sizes are the same for each unit size in the KHG product line.

* Total telescoping adjustment is 3 1/2" to 6 1/2".

FAN COILS

K I T - S E R - I - E S